



# Eeye Iris version 3.6 Installation Guide

**Citrix Consulting Services**

**Citrix Systems, Inc.**



## Notice

The information in this publication is subject to change without notice.

THIS PUBLICATION IS PROVIDED "AS IS" WITHOUT WARRANTIES OF ANY KIND, EXPRESS OR IMPLIED, INCLUDING ANY WARRANTIES OF MERCHANTABILITY, FITNESS FOR A PARTICULAR PURPOSE OR NON-INFRINGEMENT. CITRIX SYSTEMS, INC. ("CITRIX"), SHALL NOT BE LIABLE FOR TECHNICAL OR EDITORIAL ERRORS OR OMISSIONS CONTAINED HEREIN, NOR FOR DIRECT, INCIDENTAL, CONSEQUENTIAL OR ANY OTHER DAMAGES RESULTING FROM THE FURNISHING, PERFORMANCE, OR USE OF THIS PUBLICATION, EVEN IF CITRIX HAS BEEN ADVISED OF THE POSSIBILITY OF SUCH DAMAGES IN ADVANCE.

This publication contains information protected by copyright. Except for internal distribution, no part of this publication may be photocopied or reproduced in any form without prior written consent from Citrix.

The exclusive warranty for Citrix products, if any, is stated in the product documentation accompanying such products. Citrix does not warrant products other than its own.

Product names mentioned herein may be trademarks and/or registered trademarks of their respective companies.

**Copyright © 2001 Citrix Systems, Inc., 6400 NW 6th Way, Ft. Lauderdale, Florida 33309 U.S.A. All rights reserved.**

Version History		
November 13, 2001	Melissa Hopkins	Version 1.0

# Table of Contents

<b>TABLE OF CONTENTS</b> .....	<b>III</b>
<b>OVERVIEW</b> .....	<b>1</b>
<b>IRIS INSTALLATION GUIDE</b> .....	<b>2</b>
<b>IRIS CAPTURE CONFIGURATION</b> .....	<b>6</b>
ADAPTER SELECTION .....	6
CAPTURING DATA .....	6
SETTING UP A CAPTURE LOG .....	7
CONFIGURING A CAPTURE FILTER .....	8
ADDITIONAL IRIS SETTINGS .....	9

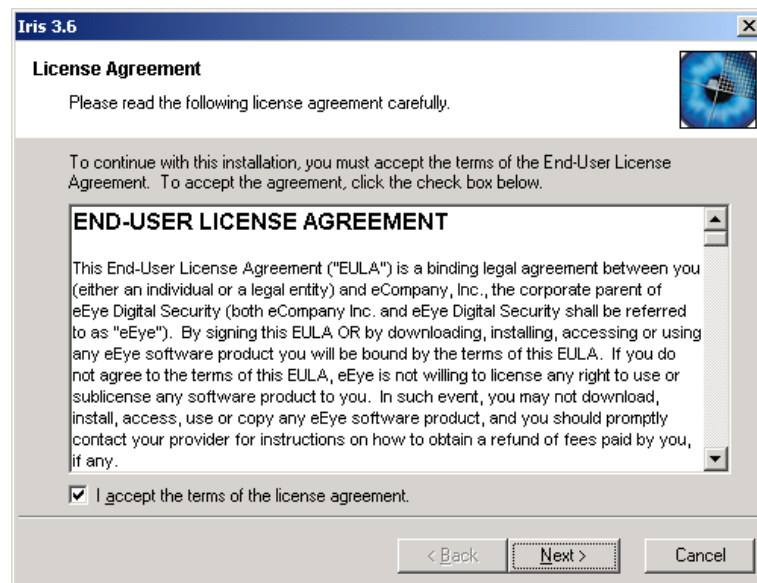
## Overview

This document describes the installation process for Eeye Iris version 3.6. In addition, a brief explanation of how to set up filters for ICA sessions and start a capture is also given.

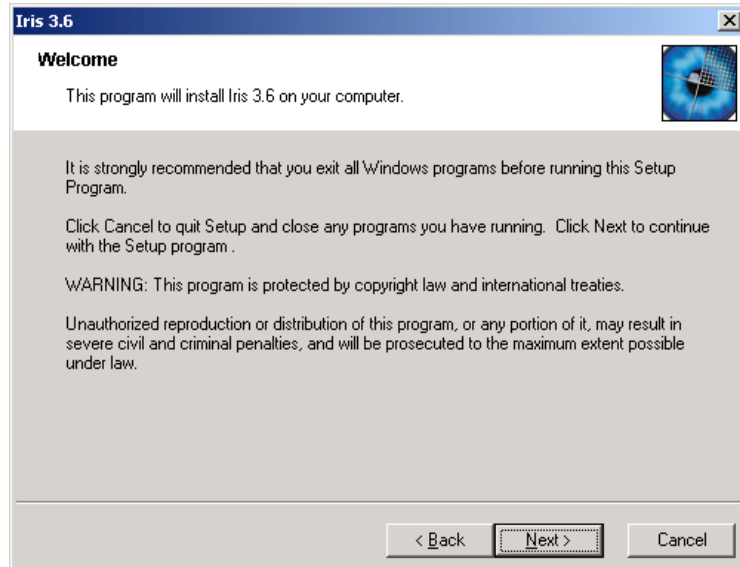
# Iris Installation Guide

Perform the following steps to install Iris:

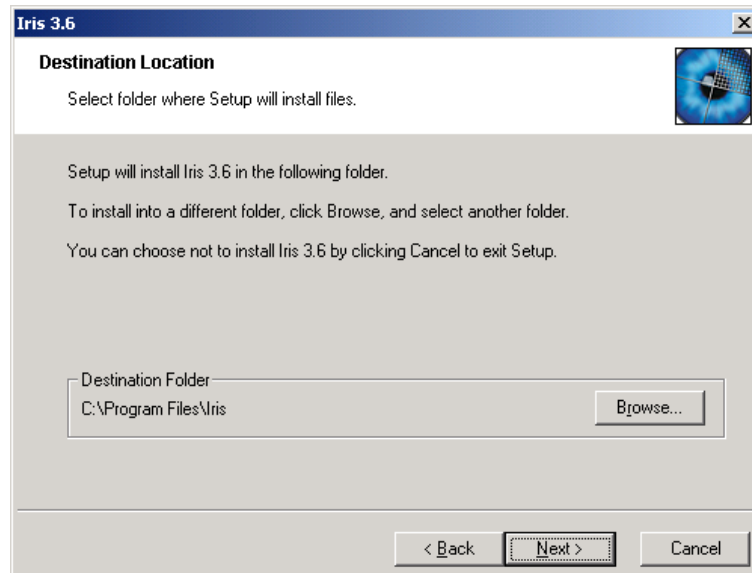
1. Obtain the Iris installation files from Eeye's web site by going to [www.eeye.com](http://www.eeye.com) as follows:
  - a. Click the **Iris Buy Now!** Link found on the home page.
  - b. Click **Download**.
  - c. Fill out the necessary information and submit to obtain an email with a link to download a 15-day evaluation version of Iris 3.6.
2. Once the email arrives with the download site link, download the self-extracting executable (for example Iris360Demo.exe).
3. Begin the installation by running the downloaded executable.
4. Accept the license agreement in the License Agreement window and click **Next**.



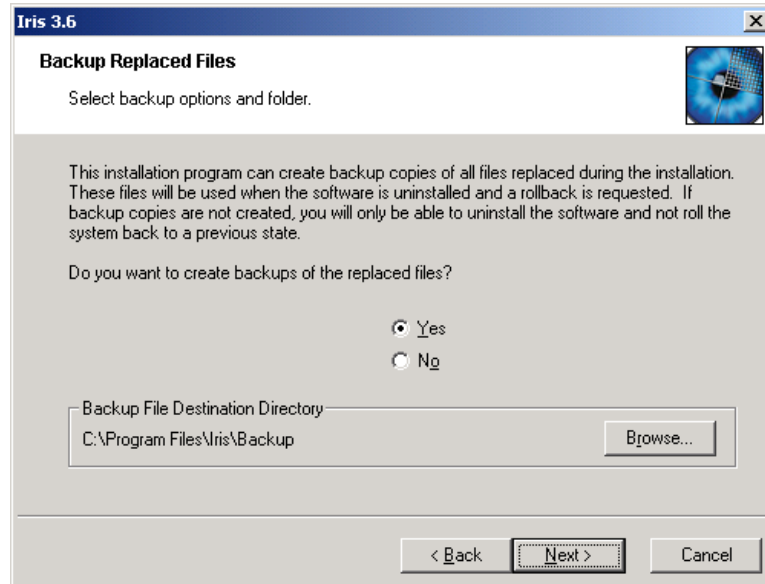
5. As stated in the Welcome window, verify that no programs are running, and click **Next**.



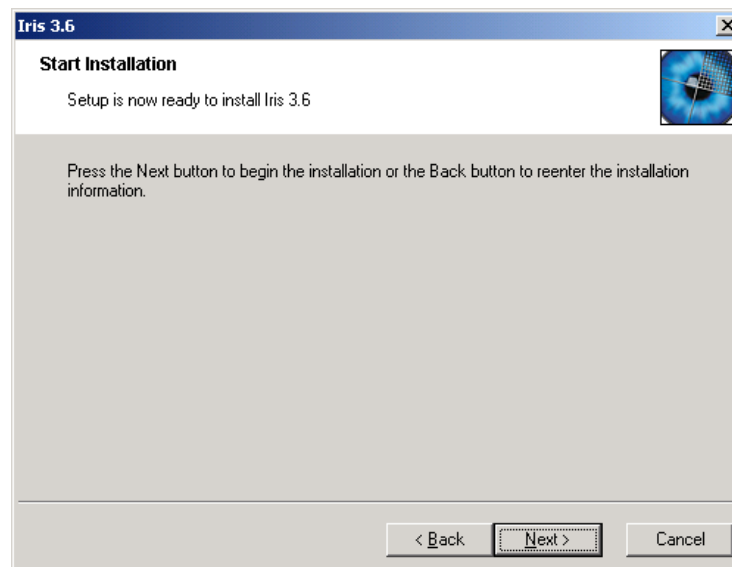
6. In the Destination Location window, verify the installation folder location, and click **Next**.



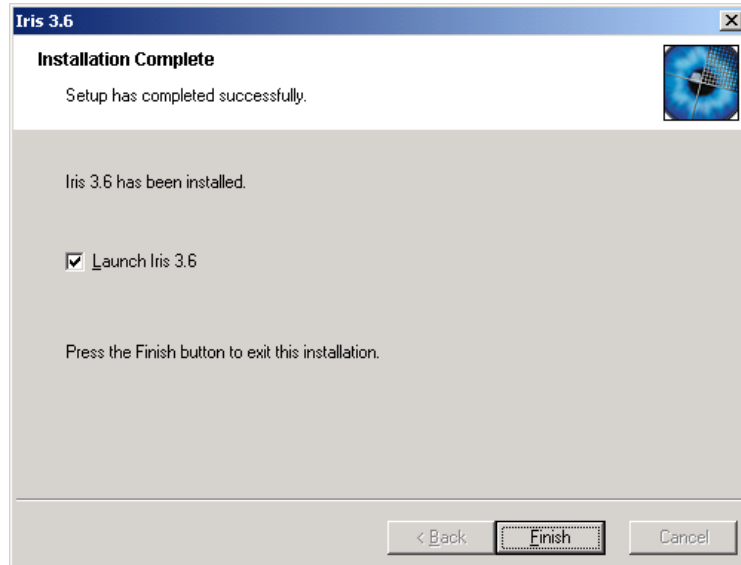
7. In the Backup Replaced files window, accept the default to backup replaced files, and click **Next**.



8. In the Start Installation window, click **Next** to begin the installation.



9. Once the installation is complete, the Installation Complete window appears.



Uncheck the Launch Iris 3.6 checkbox, and click **Finish**.

10. Reboot the machine.

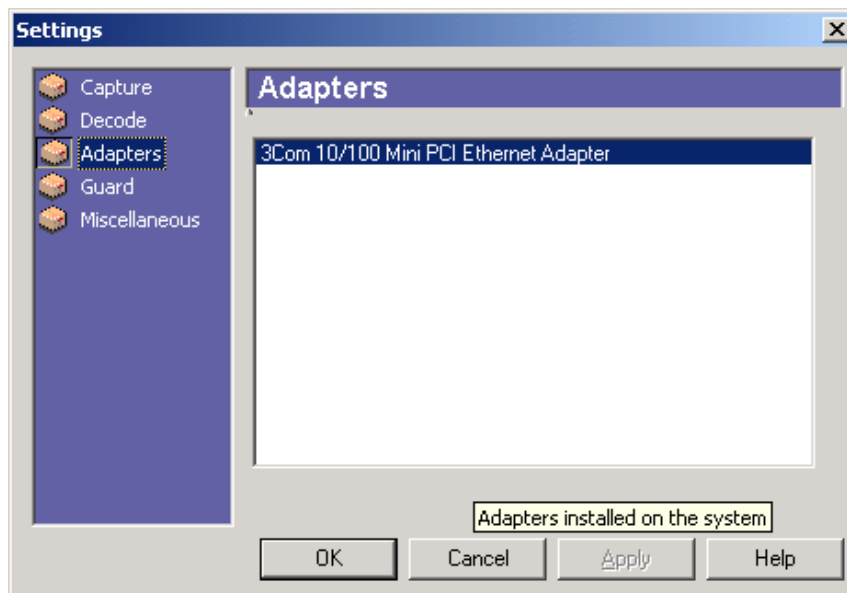
***Important: Iris will not run properly until the machine is rebooted.***

# Iris Capture Configuration

After Iris is installed and the machine is rebooted, Iris is ready to begin capturing packets. The following sections describe how to use the most common functions in Iris.




## Adapter Selection

1. The first time Iris is started, the Adapter settings window appears and a network adapter must be selected. Select the network adapter displayed and choose OK.



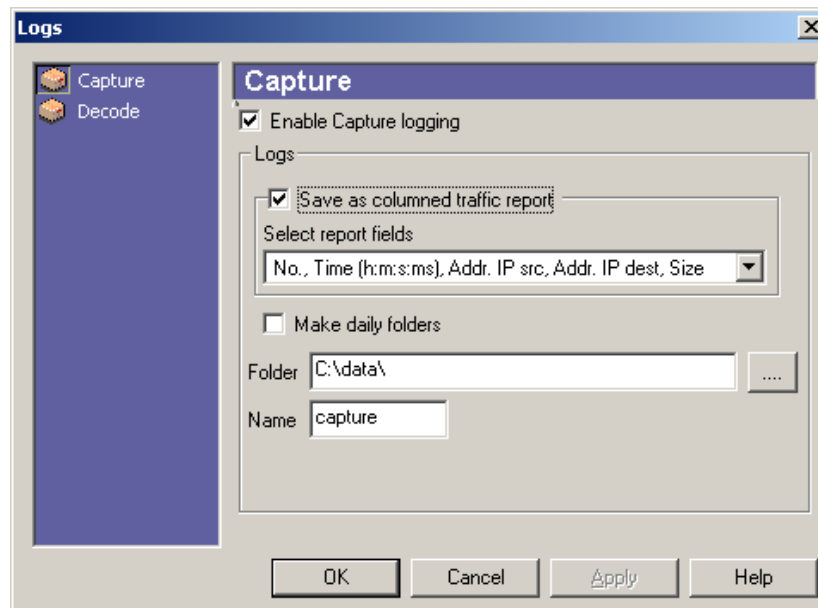
2. If more than one adapter is displayed, choose the adapter on the network where data will be captured.

## Capturing Data

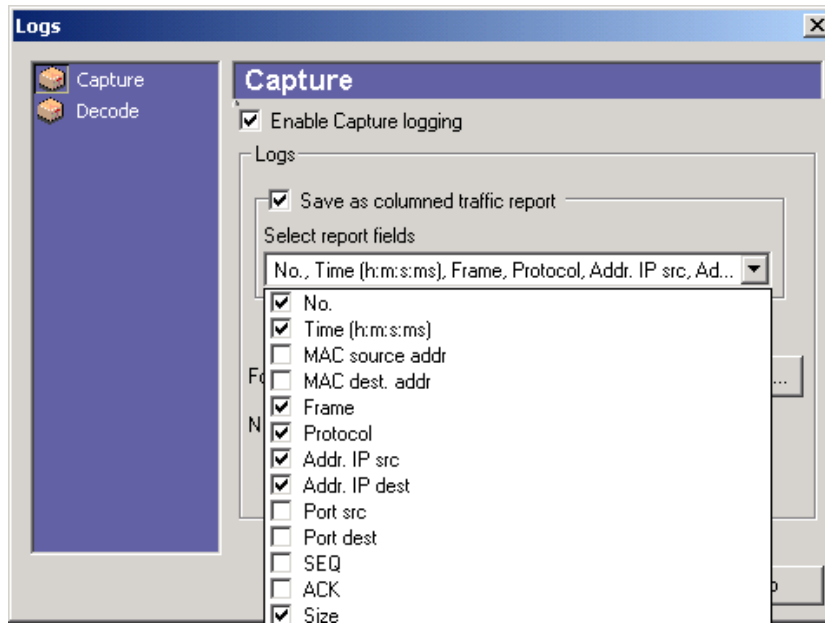
1. To begin capturing data, choose **Start** from the **Capture** menu, or click on the Start/Stop Capture toolbar shortcut . To stop capturing data, choose **Stop** from the **Capture** menu, or click the Start/Stop Capture toolbar shortcut again .
2. To clear the capture window, start a new capturing session by choosing **New Capturing Session** from the **File** menu or by clicking on the new capturing session icon .

## Setting up a Capture Log

1. Choose **Logs**→**Capture Logs** from the **Tools** menu.

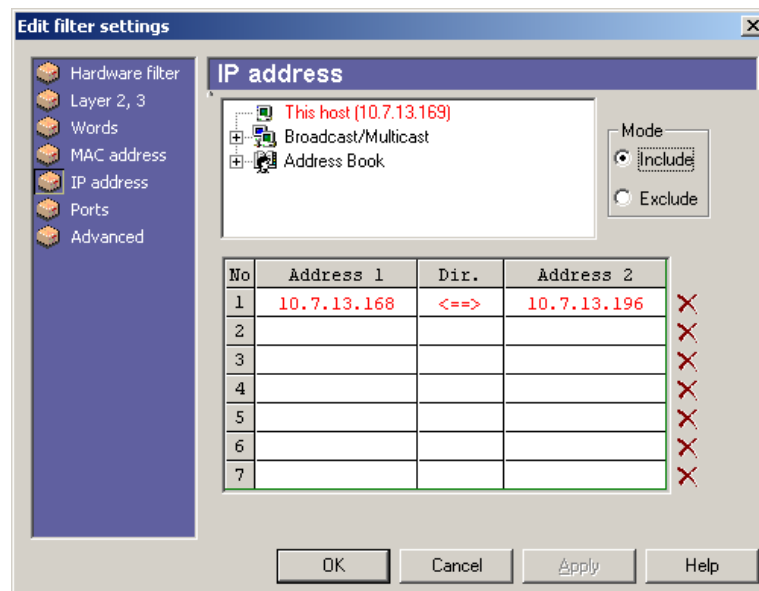


2. Verify that **Enable Capture logging** is checked.
3. Verify the **Folder** location for the logs.
4. Modify the name of the log file if needed. The name specified is always appended with a date/time stamp when saved.
5. Check the **Save as columned traffic report** option and select the reports fields desired. Options are shown below:

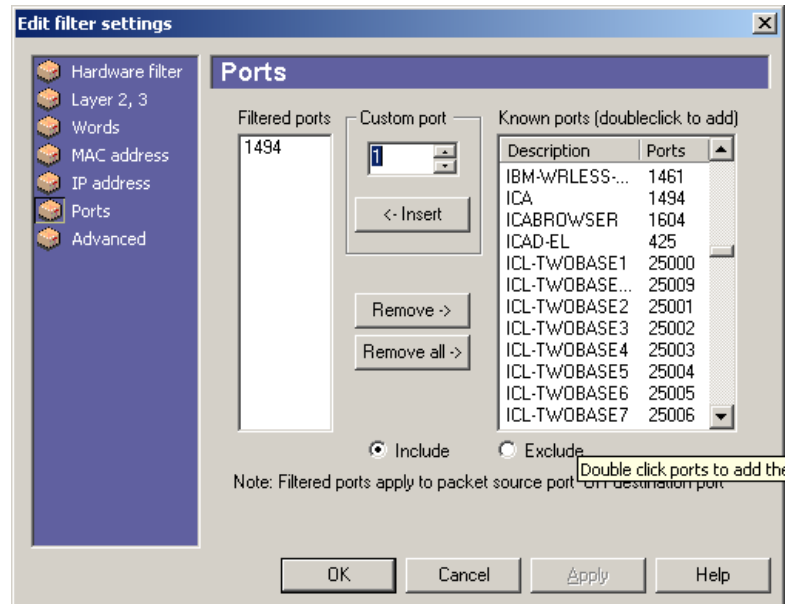


## Configuring a Capture Filter

1. To configure a capture filter for capturing ICA packets between a client and server, perform the following tasks:
2. Choose **Edit filter** from the **Filters** menu.
3. Select **IP address** on the left pane in the window. Verify that **Include** is selected and that a rule is configured to capture all packets between the IP address of the MetaFrame server and the IP address of the client workstation.



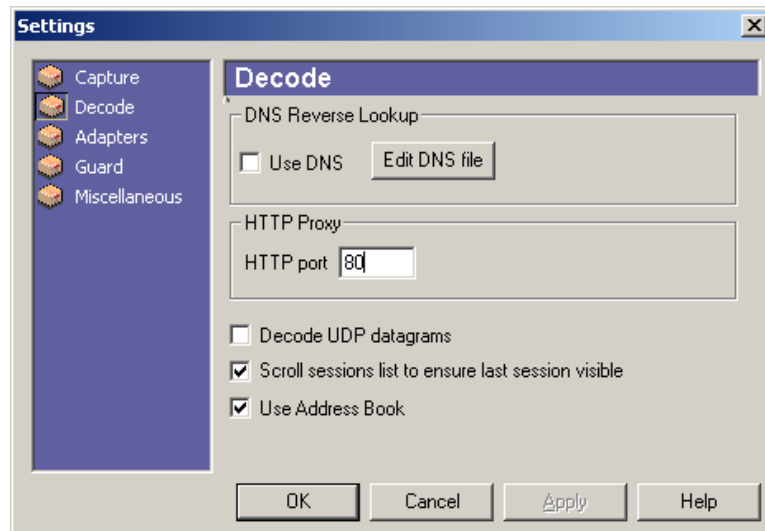
4. Select **Ports** on the left pane in the window. Verify that the **Include** radio button is selected and that a rule is configured to filter on port 1494 (ICA).



## Additional Iris Settings

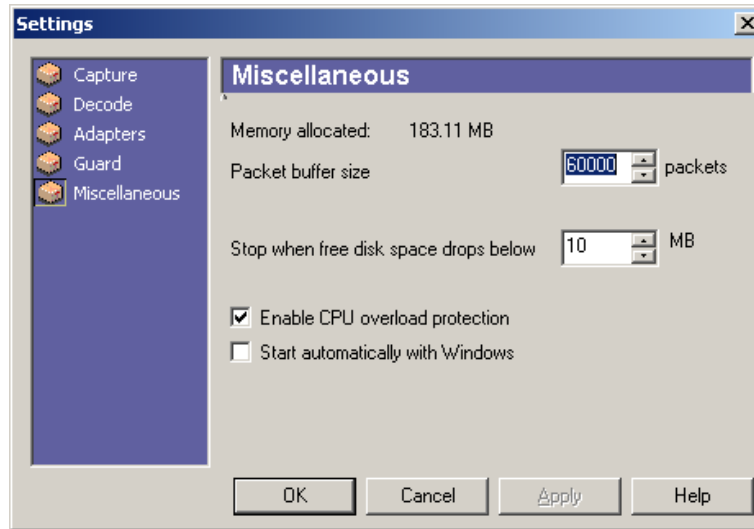
Additional configuration settings are available in Iris by choosing **Settings** from the **Tools** menu. Consider the following options:

- On an isolated network without DNS, configure Iris to not use DNS by selecting the Decode option in the left pane of the window.



Uncheck the **Use DNS** check box.

- By default, Iris is configured with a packet buffer size of 2000 packets. When this buffer size is reached and capture logs are enabled, Iris will save the current buffer to a file and start a new buffer and file. Depending on the number of packets to be captured, the captured data may be broken into many files. To avoid this, set the packet buffer size to its maximum by selecting **Miscellaneous** in the left pane of the window and entering 60,000 as the new packet buffer size.





6400 NW 6<sup>th</sup> Way

Fort Lauderdale, FL 33309

954-267-3000



<http://www.citrix.com>

Copyright © 2000 Citrix Systems, Inc. All rights reserved. Citrix, WinFrame and ICA are registered trademarks, and MultiWin and MetaFrame are trademarks of Citrix Systems, Inc. All other products and services are trademarks or service marks of their respective companies. Technical specifications and availability are subject to change without prior notice.