



Basic Installation of IIS & NFuse on Windows 2000



Revision History

Revision	Change Description	Updated By	Date
1	Original Document	Melissa Hopkins	2/9/2001
2	Modified to current template	Orlando Melendez	3/5/2001
3			
4			
5			
6			



Table of Contents

1	Overview	1
2	IIS Installation.....	2
3	NFuse Installation.....	3
4	Web Server Extensions Installation.....	4
5	Web Site Wizard Installation	6



1 Overview

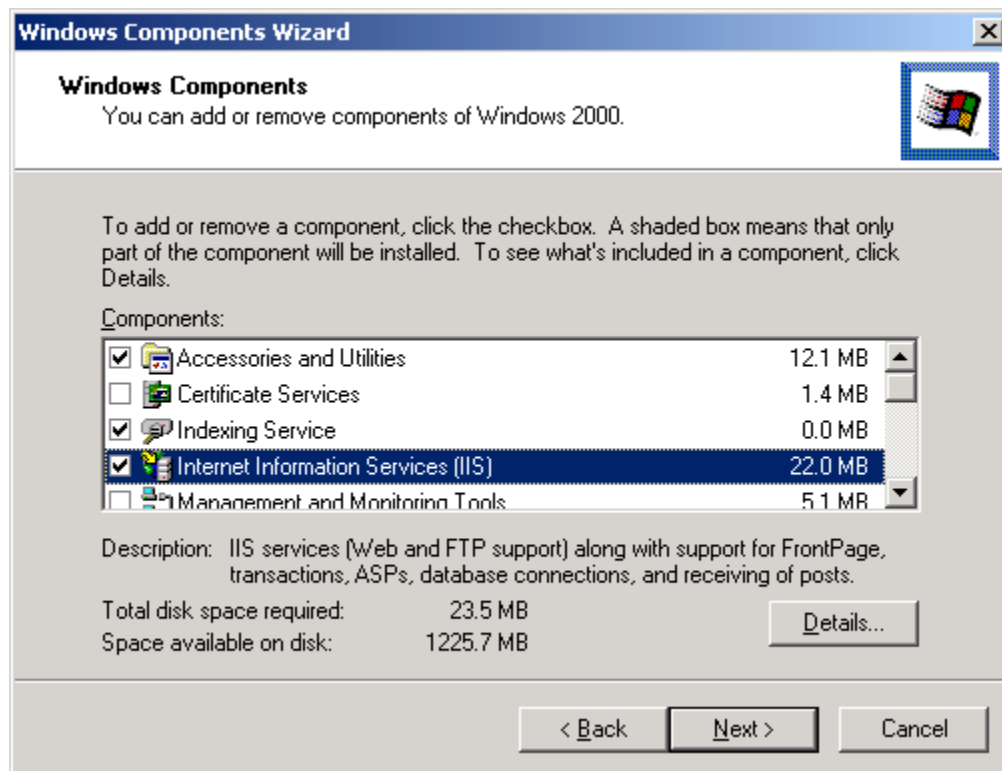
This document provides an overview of the installation process required to configure a Windows 2000 server for use as a web server with NFuse 1.5. Additional details can be found in the following locations:

- NFuse 1.5 Administrator's Guide (included with the NFuse 1.5 CD or at <http://download.citrix.com>)
- [The Art and Science of Web Server Tuning with Internet Information Services 5.0](#)
- [Internet Information Services 5.0 Technical Overview](#)

2 IIS Installation

As a best practice, Internet Information Services (IIS) should not be installed on a Windows 2000 server running MetaFrame. A separate Windows 2000 server environment should be created solely for the purpose of running a Web Server using IIS and NFuse 1.5.

The Windows 2000 installation process provides the option of installing IIS during the GUI installation phase on the Windows 2000 Components screen that appears just after the Computer Name and Administrator Password screen (the below screen shot is taken from the Add/Remove Windows components wizard and not from the Windows 2000 Server Setup process, however the functionality is the same). The IIS option is checked by default as shown below.



Once the IIS installation is complete, the server is ready for the installation of NFuse 1.5.



3 NFuse Installation

NFuse is packaged as two separate components. The Citrix XML Service that runs on the MetaFrame server farm is installed with MetaFrame 1.8 Feature Release 1, included in the MetaFrame 1.8 SP2 package. The Citrix Web Server Extensions and Web Site Wizard can be downloaded free of charge from <http://download.citrix.com>.

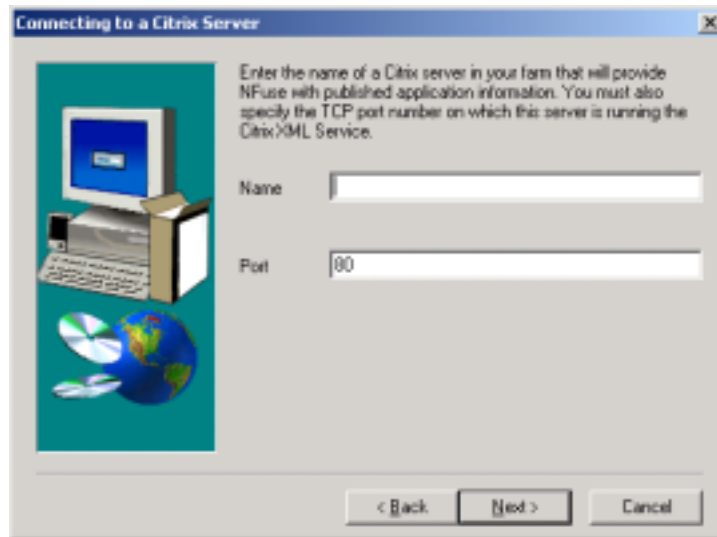
The complete NFuse download package (NF15_CD.exe) includes the following files:

- NFuseAdminGuide1.5.pdf – The NFuse Administrator's Guide documentation.
- NFuseWebExt-IIS.exe – Installation files for the NFuse Web Server Extensions on Microsoft Internet Information Server.
- NFuseWebExt-UNIX.tar.gz – Installation files for the NFuse Web Server Extensions on supported UNIX platforms (Netscape Enterprise Server, iPlanet Web Server, and Apache Server)
- NFuseWizard.exe – Installation file for the NFuse Web Site Wizard.
- README.TXT – Describes all NFuse documentation, how to get support, and additional usage notes.
- WebInst – The Web-based ICA Client Installation directory that contains the setup files for all 6.00 clients available (all languages and platforms).

4 Web Server Extensions Installation

To install the NFuse Web Server Extensions on the Windows 2000 IIS server configured in the previous section, run the NFuseWebExt-IIS.exe file. The following setup screens require additional input where defaults are not available:

- Connecting to a Citrix Server – This screen prompts for the name of the Citrix MetaFrame server running the Citrix XML service. This is the server that the NFuse Web Server Extensions will communicate with to authenticate users and retrieve lists of applications that a user is authorized to use. The port number is the port on which the Citrix XML service is running.

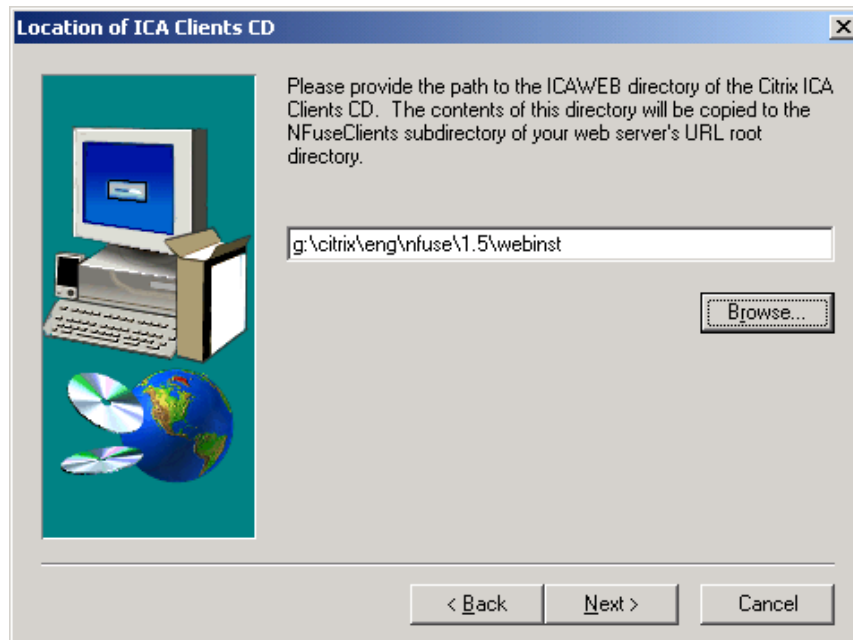


- Configure Root URL – This screen defaults the root URL for the NFuse Web Server Extensions to C:\inetpub\wwwroot. This path is valid and does not require modification. However, when the Next button is clicked on this screen a message appears asking if the ICA Clients should be copied to the NFuse Clients directory (see screen shot below).





- Click the Yes button. The NFuse installation process will then prompt for the location of the ICA client installation files. This path should point to the WebInst directory included in the NFuse 1.5 download package or on the NFuse 1.5 CD (the files can also be found on the ICA Clients CD in the ICAWEB directory). The example path in the screen shot below copies all ICA clients to the web server's C:\inetpub\wwwroot\NfuseClients subdirectory.





5 Web Site Wizard Installation

The Web Site Wizard does not need to be installed on the IIS server. However, the Web Site Wizard allows for fast and easy creation of NFuse web sites based on pre-configured templates. To install the Web Site Wizard, run the NFuseWizard.exe file. Accept all default file locations and parameters. After installation is complete, the Web Site Wizard can be found under Start/Programs/Citrix/NFuse/Web Site Wizard.